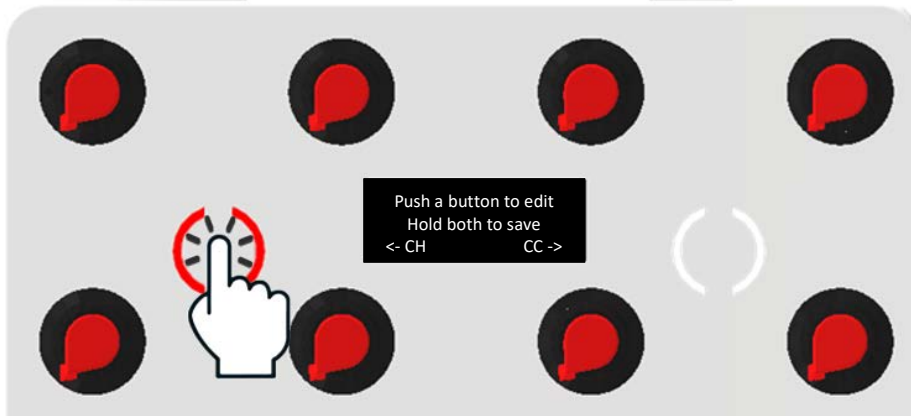


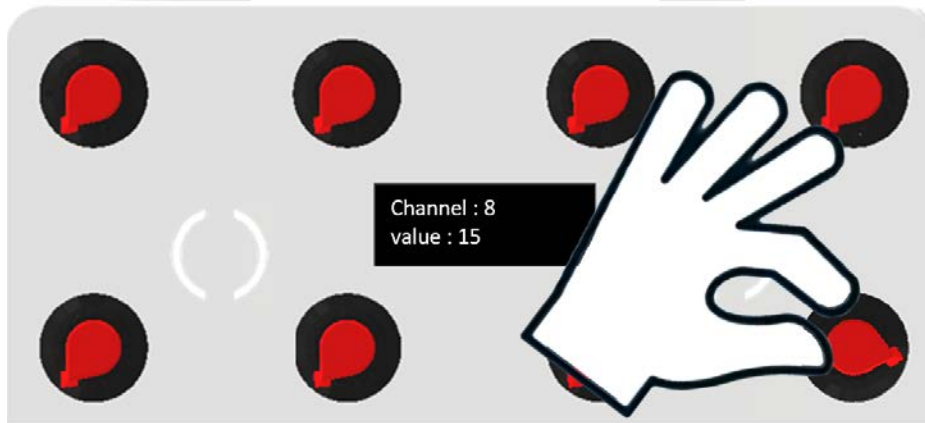
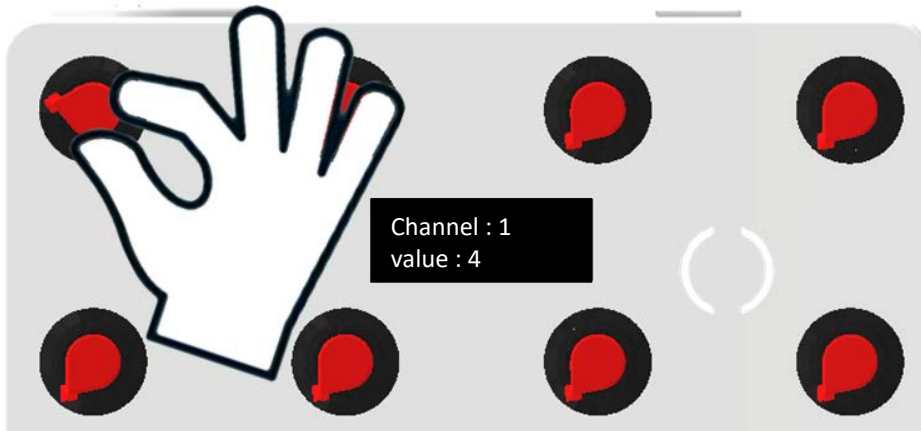
User Manual

Assign midi channels

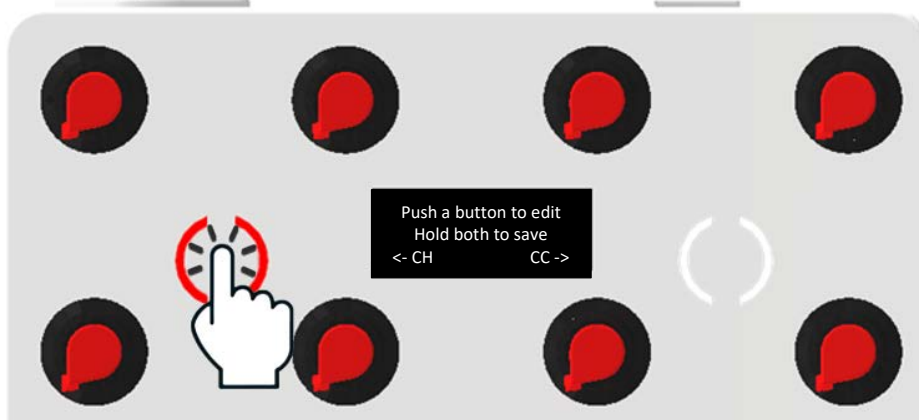
Press the left button once to enter the midi channel edit menu:



Turn the desired knob to edit its own value:

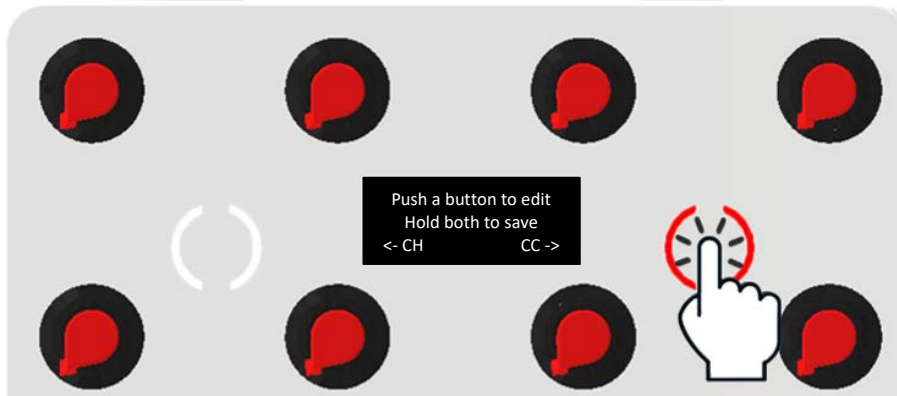


To confirm, press the left button again:

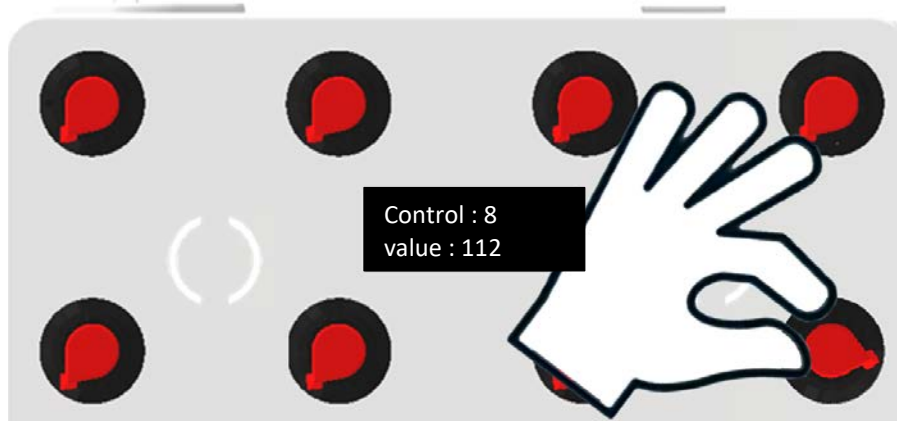
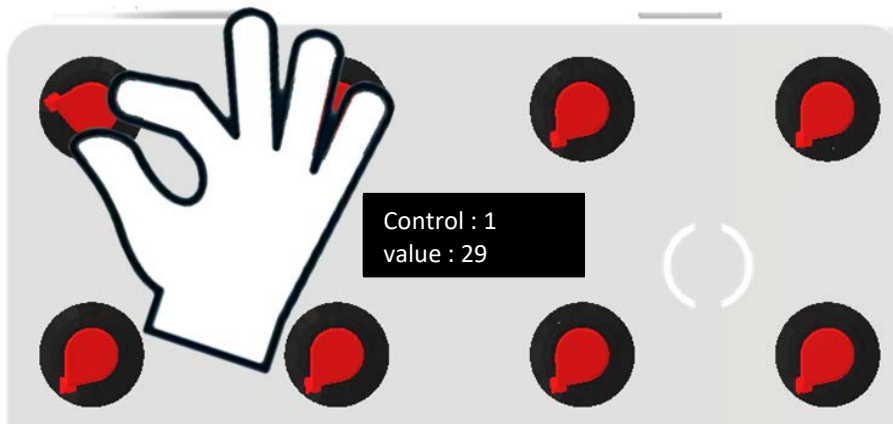


Assign midi control

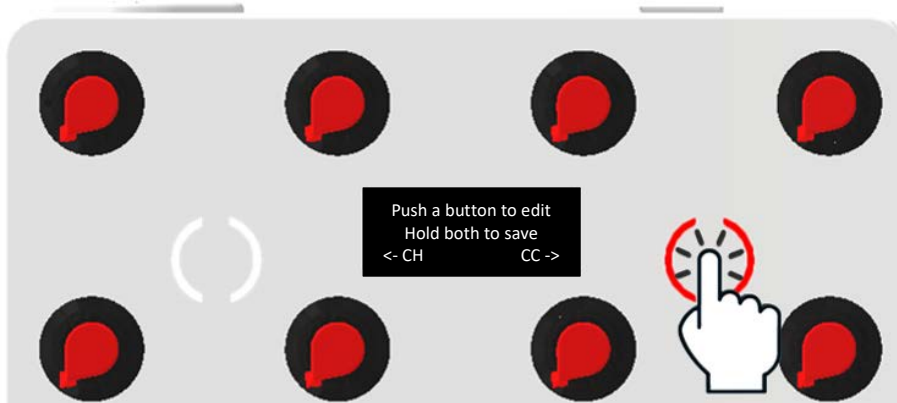
Press the right button once to enter the midi control edit menu:



Turn the desired knob to edit its own value:

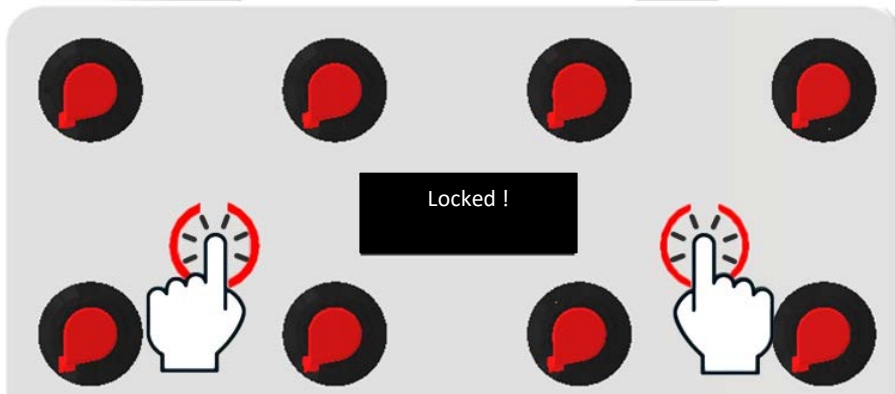
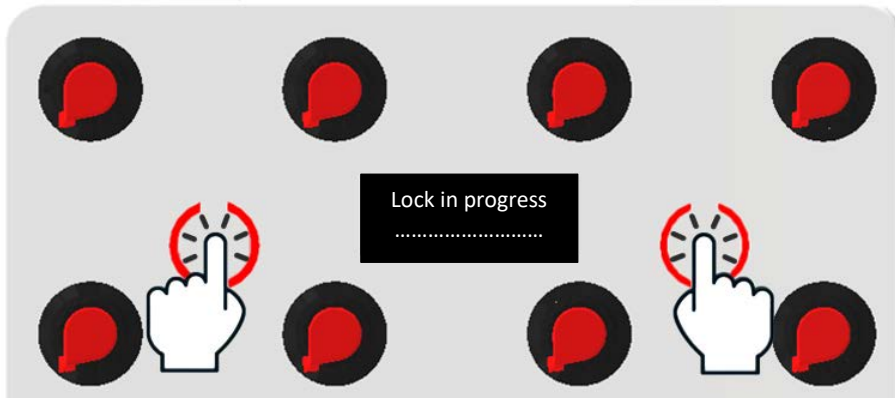


To confirm, press the right button again:

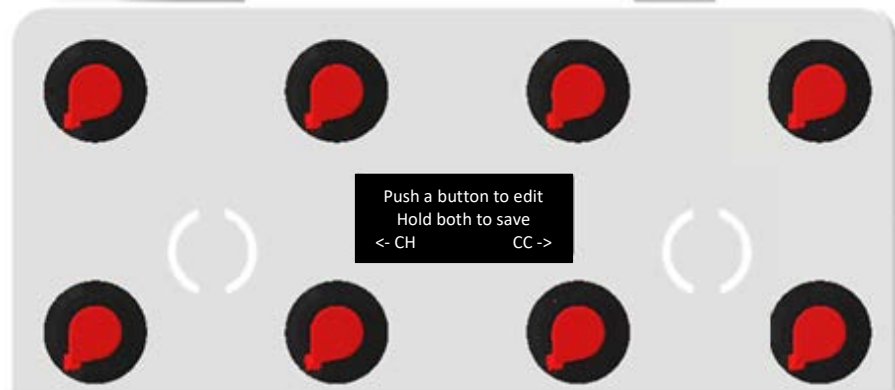
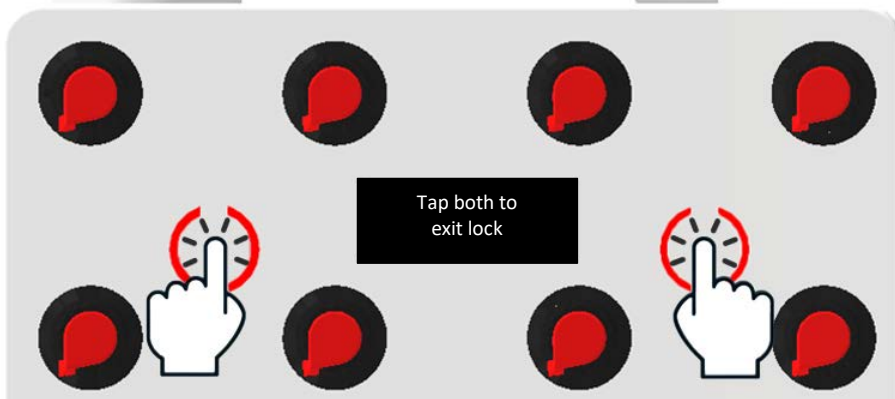


Lock buttons

To lock the edit button to avoid accidental touching, press both buttons:

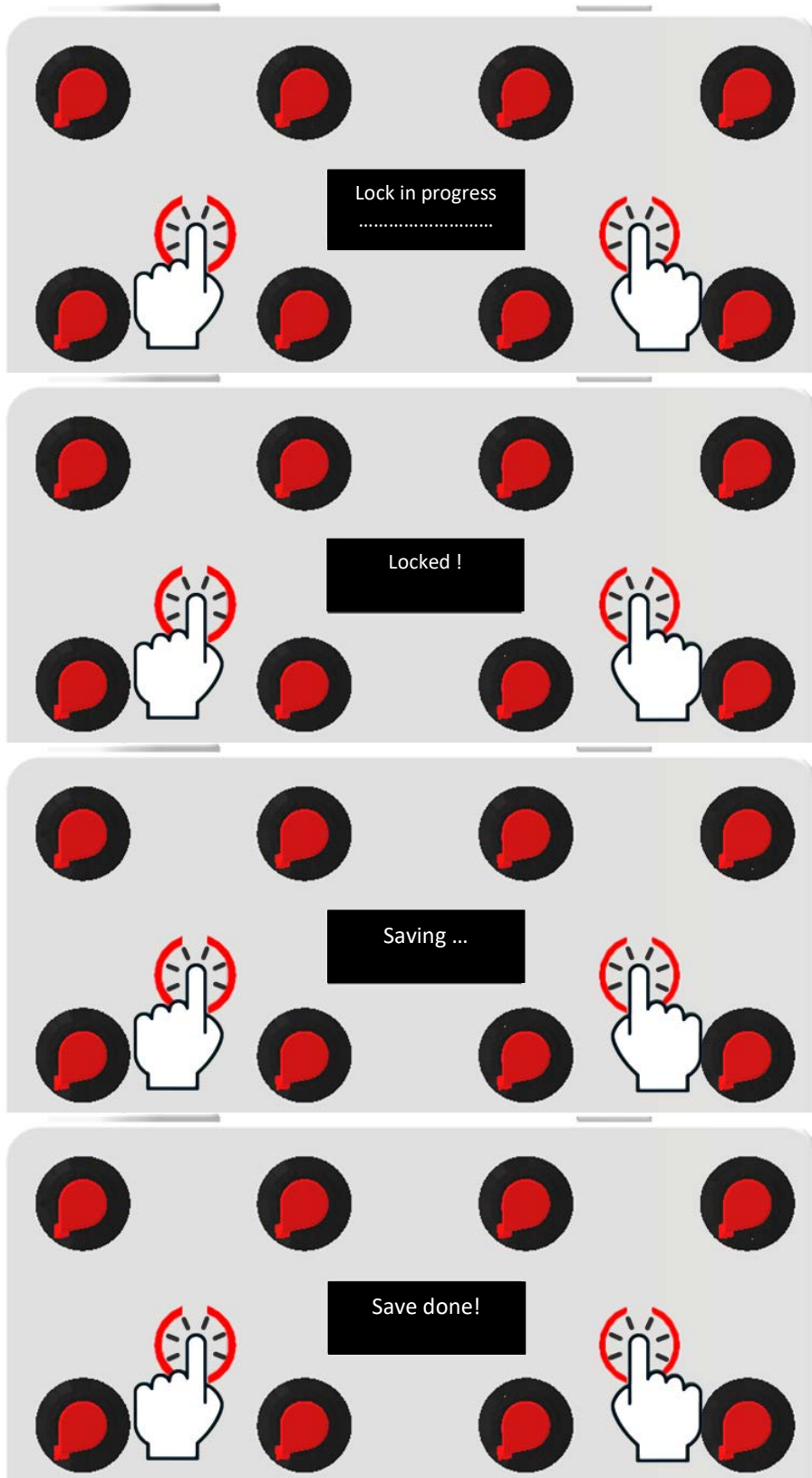


To unlock the edit button, briefly press both buttons:



Save edit

To save channel and control values, press both buttons simultaneously for 5 seconds (wait for lock menu to scroll)



How to connect ?

1. To supply energy you can plug in usb adaptator (if you connect to a computer it may not work)



or a 9VDC power supply



2. Connect the MIDI output of the potarbox with a DIN5 cable to an input "IN"
- (3.) For the USB adapter connect the MIDI output of the potarbox with the "IN" cable of the adapter. Connect the USB of the adapter to your computer (plug and play).

